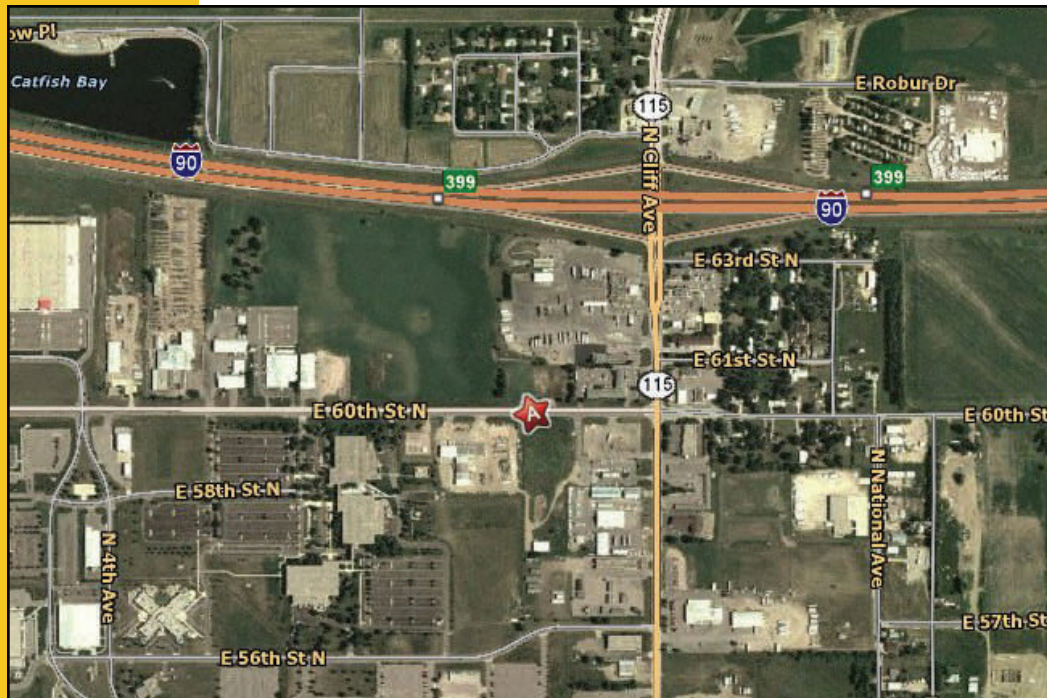


LAND FOR SALE



1000 E. 60th Street N., Sioux Falls, SD

Size: Approx. 3 Acres
(123,492 SF)

Price: \$3.50 psf

Zoning: C2

Will sub-divide



- Approx 325 feet of frontage on 60th Street N
- Fantastic location near Cliff Avenue and I-90 Exit.
- Neighbors include Pilot Travel Center, Days Inn, Sheehan Mack and Citibank to name a few.
 - Great exposure and visibility.
- Traffic count on 60th St in that area is approx. 12,400 cars per day and on Cliff Avenue approx. 16,400 cars per day.

For more information please contact:

Samuel R. Assam

Assam Commercial Real Estate, Inc.
3200 West 49th Street Sioux Falls, SD 57106

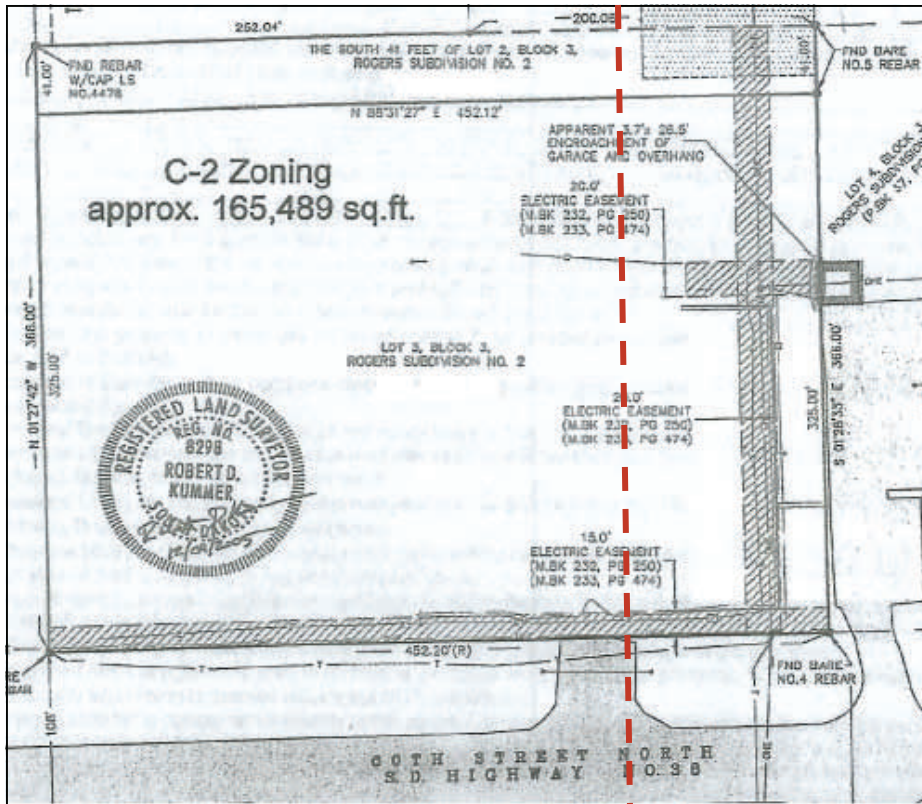
(605) 334-8040

assamre@assamcompanies.com www.assamcompanies.com

This information has been secured from sources we believe to be reliable. We make no representation or warranties, expressed or implied, as to the accuracy of the information. All references to age, square footage, income, and expenses are approximate. Buyers or Lessors should conduct their own independent investigations and rely only on those results.

LAND FOR SALE

1000 E. 60th Street N., Sioux Falls, SD



**For more information
please contact:**

Samuel R. Assam

Assam Commercial Real Estate, Inc.

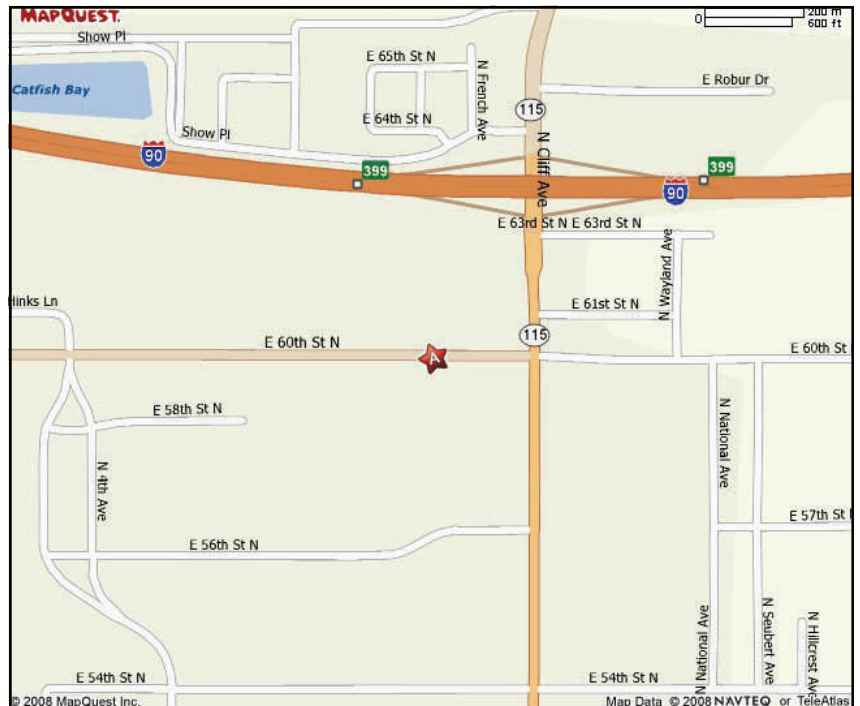
3200 West 49th Street

Sioux Falls, SD 57106

(605) 334-8040

assamre@assamcompanies.com

www.assamcompanies.com



This information has been secured from sources we believe to be reliable. We make no representation or warranties, expressed or implied, as to the accuracy of the information. All references to age, square footage, income, and expenses are approximate. Buyers or Lessors should conduct their own independent investigations and rely only on those results.