

# LAND FOR SALE

- Nice corner lot that provides convenient access to I-229 and East 10th Street
- Offers excellent exposure with a 2010 traffic count totaling 7,000 vehicles a day on Cleveland Avenue
- South Dakota licensed Real Estate Broker is a fractional owner.



## 11th Street & Cleveland Avenue Sioux Falls, SD

**Size:** 12,603 SF approx.

**Sale Price:** \$44,000

**Taxes:** \$464.59 (2010)

**Zoning:** RD/4 with  
Conditional Use  
Permit



## For more information please contact:

**Samuel R. Assam**

Assam Commercial Real Estate, Inc.  
3200 West 49th Street Sioux Falls, SD 57106

**(605) 334-8040**

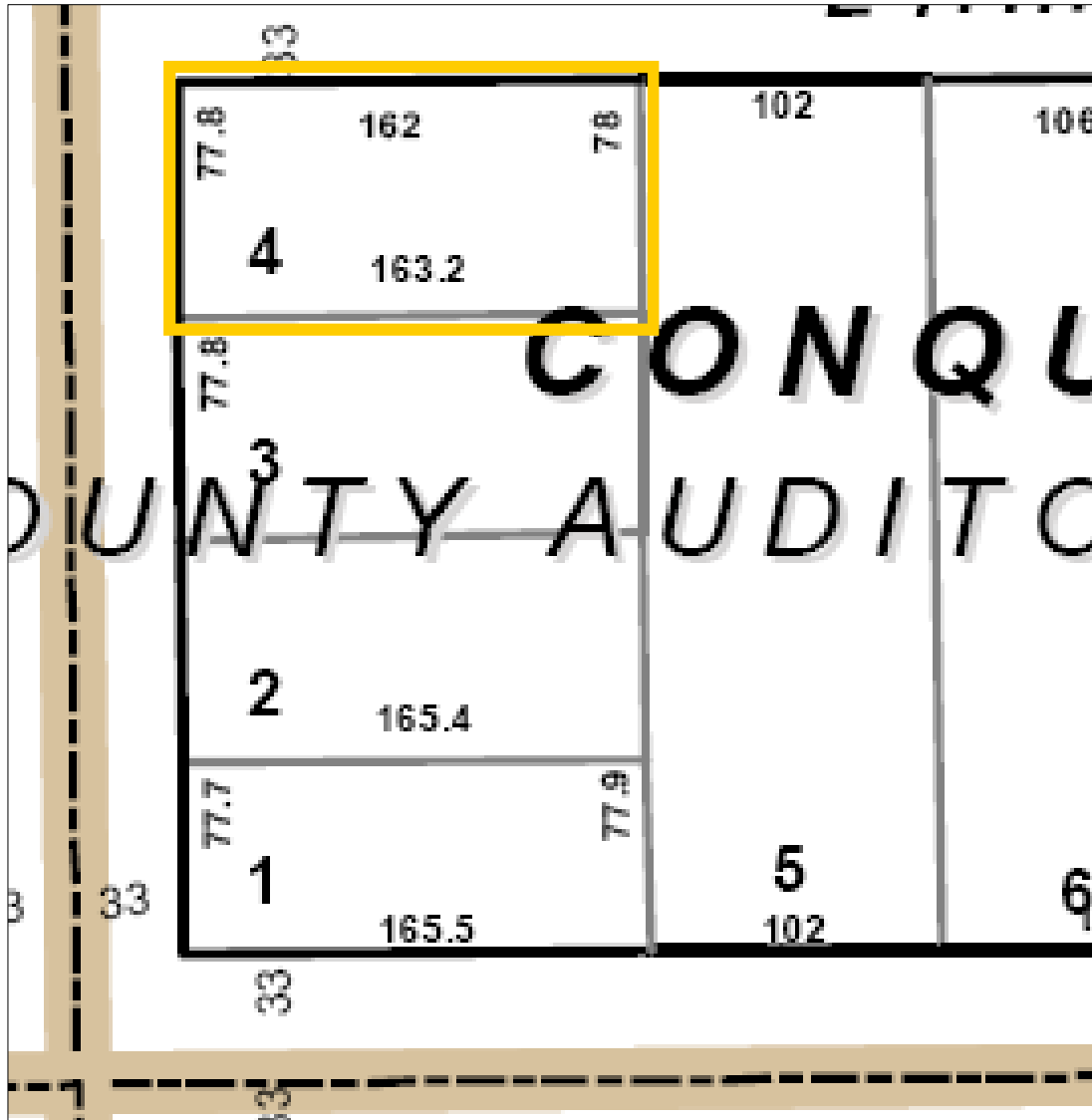
assamre@assamcompanies.com

www.assamcompanies.com



This information has been secured from sources we believe to be reliable. We make no representation or warranties, expressed or implied, as to the accuracy of the information. All references to age, square footage, income, and expenses are approximate. Buyers or Lessors should conduct their own independent investigations and rely only on those results.

# 11th Street & Cleveland Avenue Sioux Falls, SD



**For more information please contact:**

**Samuel R. Assam**

Assam Commercial Real Estate, Inc.  
3200 West 49th Street Sioux Falls, SD 57106

**(605) 334-8040**

assamre@assamcompanies.com www.assamcompanies.com

This information has been secured from sources we believe to be reliable. We make no representation or warranties, expressed or implied, as to the accuracy of the information. All references to age, square footage, income, and expenses are approximate. Buyers or Lessors should conduct their own independent investigations and rely only on those results.