

# LAND FOR SALE



## Harrisburg, SD

**Type: Land**

**Size: Approx. 136,593 SF**

**Price: \$1.21 psf "AS IS"  
\$1.40 psf with final  
Grading**

**Zoning: Commercial**

**Legal: Lot 11A and Lot 12A of  
Smith's Second Addition in SE  
1/4 of Section 31, Township  
100N, Range 50W, Lincoln  
County, South Dakota**

- Located minutes from the I29 Tea/Harrisburg exit just 5 minutes south of Sioux Falls.
- Harrisburg's population is approximately 2,700 people.
- One of the fastest growing communities in South Dakota, Harrisburg is home to the following businesses:

Gage Brothers

Showplace Wood Products

First National Bank

Connect2Tech

Sioux Valley Clinic

Avera McKennan Hospital & University Health Center

**For more information please contact:**

**Samuel R. Assam**

Assam Commercial Real Estate, Inc.

3200 West 49th Street     Sioux Falls, SD 57106

**(605) 334-8040**

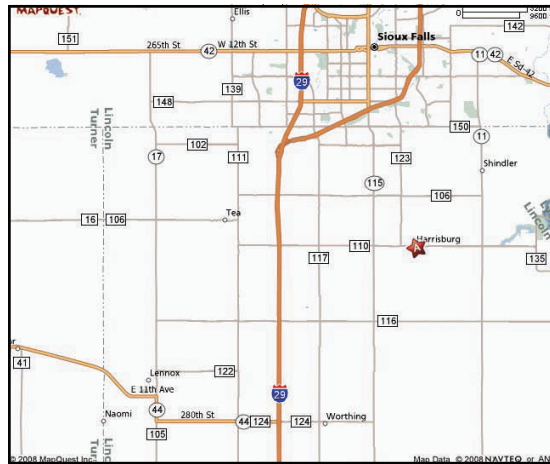
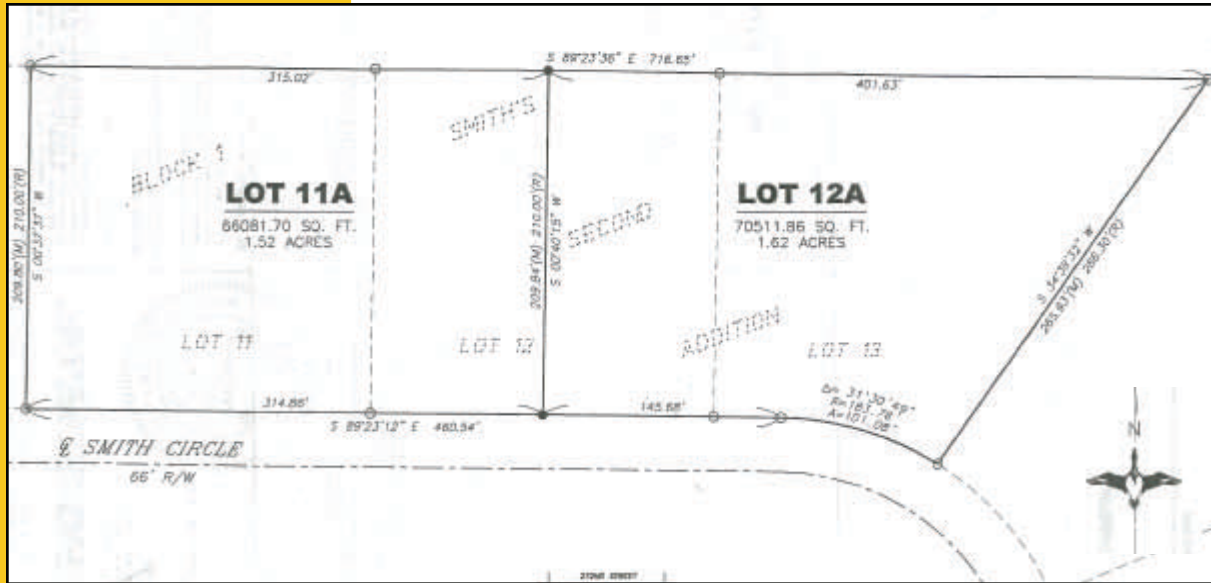
assamre@assamcompanies.com

www.assamcompanies.com



This information has been secured from sources we believe to be reliable. We make no representation or warranties, expressed or implied, as to the accuracy of the information. All references to age, square footage, income, and expenses are approximate. Buyers or Lessors should conduct their own independent investigations and rely only on those results.

# HARRISBURG LAND FOR SALE



**For more information please contact:**

**Samuel R. Assam**

Assam Commercial Real Estate, Inc.  
3200 West 49th Street      Sioux Falls, SD 57106

**(605) 334-8040**

assamre@assamcompanies.com

www.assamcompanies.com



This information has been secured from sources we believe to be reliable. We make no representation or warranties, expressed or implied, as to the accuracy of the information. All references to age, square footage, income, and expenses are approximate. Buyers or Lessors should conduct their own independent investigations and rely only on those results.

b e -