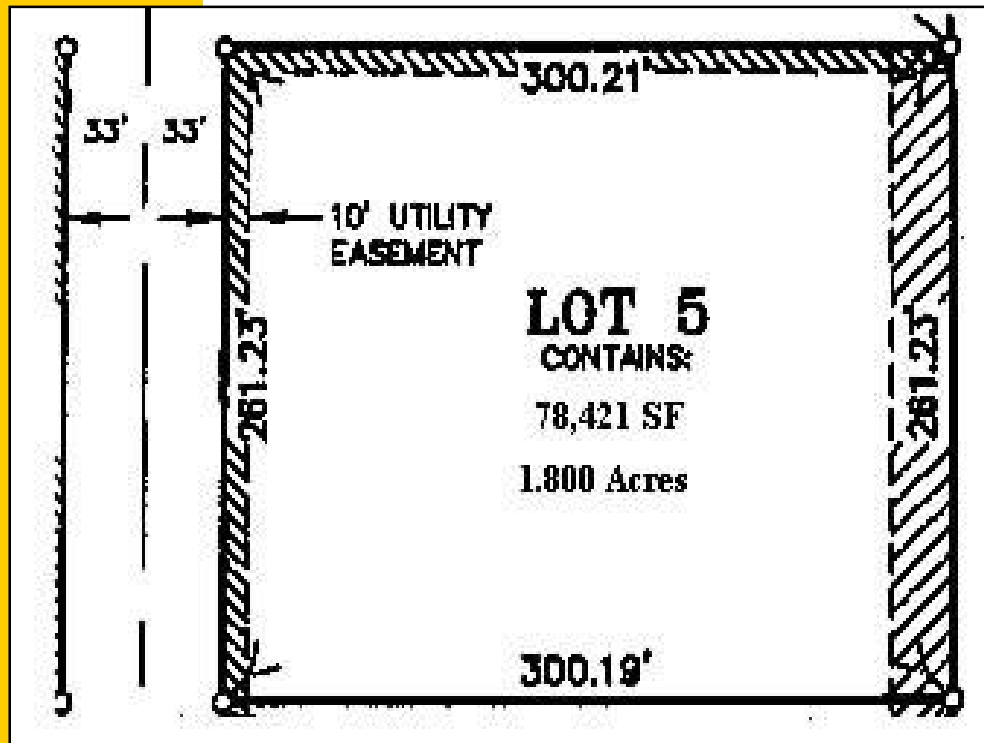


# LAND FOR SALE



## Lot 5

**Size:** 78,421 Sq. Ft  
(1.8 Acre)

**Price:** \$1.75 psf

**Taxes (2010):** \$3,042.68

**Zoning:** Commercial

## Hwy 106 East of Tea & West of Interstate 29 Tea, SD

- **ONLY ONE PARCEL LEFT!**
- **Convenient access to I-29 and Tea, SD.**
- **Just minutes south west of Sioux Falls city limits.**
- **Great location for distribution, warehouse, light manufacturing or contractor shop.**
- **Services include rural water and natural gas.**

## For more information please contact:

Samuel R. Assam

Assam Commercial Real Estate, Inc.  
3200 West 49th Street Sioux Falls, SD 57106

**(605) 334-8040**

assamre@assamcompanies.com www.assamcompanies.com



# Hwy 106 East of Tea & West of Interstate 29 Tea, SD



**For more information please contact:**

**Samuel R. Assam**

Assam Commercial Real Estate, Inc.  
3200 West 49th Street Sioux Falls, SD 57106

**(605) 334-8040**

assamre@assamcompanies.com [www.assamcompanies.com](http://www.assamcompanies.com)