

LAND FOR LEASE/BUILD TO SUIT

Excellent exposure to this premier business site.

2009 traffic count on East Arrowhead Parkway totaling 19,000 vehicles per day

Additional land available

Size: Approx. 56,314 SF

Lease Price: TBD/NNN

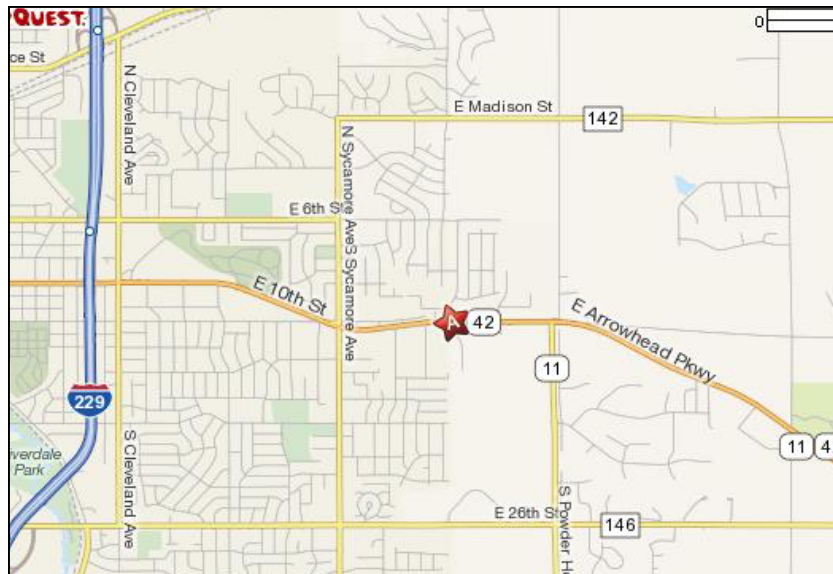
Zoning: C-2

RE Taxes: \$3043.21 (2009)

South Dakota Licensed Real Estate Broker is a fractional owner.



West of Foss Avenue on East Arrowhead Parkway
Sioux Falls, SD



For more information please contact:

Samuel R. Assam

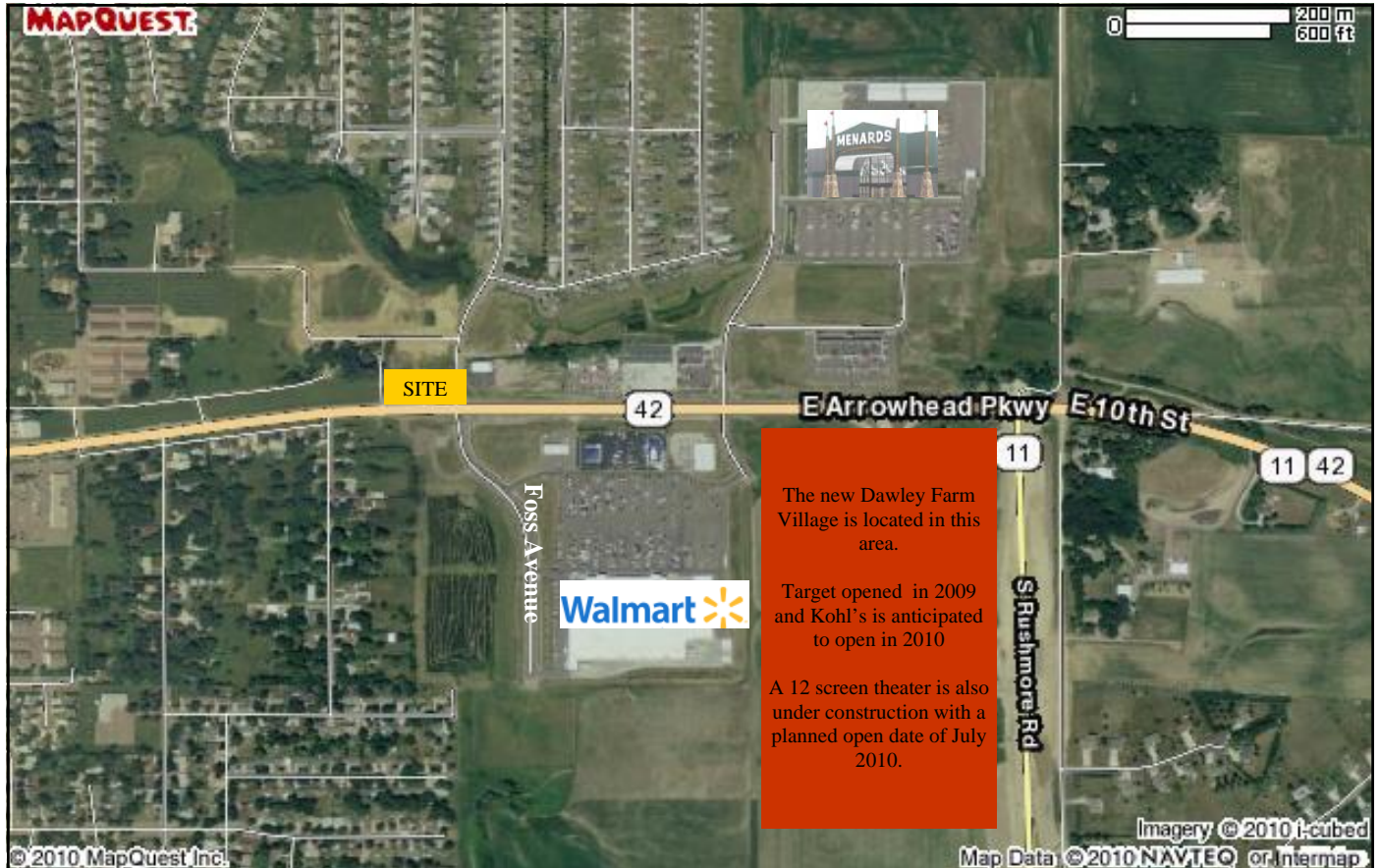
Assam Commercial Real Estate, Inc.
3200 West 49th Street Sioux Falls, SD 57106
(605) 334-8040

assamre@assamcompanies.com

www.assamcompanies.com

This information has been secured from sources we believe to be reliable. We make no representation or warranties, expressed or implied, as to the accuracy of the information. All references to age, square footage, income, and expenses are approximate. Buyers or Lessors should conduct their own independent investigations and rely only on those results.

LAND FOR LEASE/BUILD TO SUIT



For more information please contact:

Samuel R. Assam

Assam Commercial Real Estate, Inc.

3200 West 49th Street Sioux Falls, SD 57106

(605) 334-8040

assamre@assamcompanies.com

www.assamcompanies.com

This information has been secured from sources we believe to be reliable. We make no representation or warranties, expressed or implied, as to the accuracy of the information. All references to age, square footage, income, and expenses are approximate. Buyers or Lessors should conduct their own independent investigations and rely only on those results.